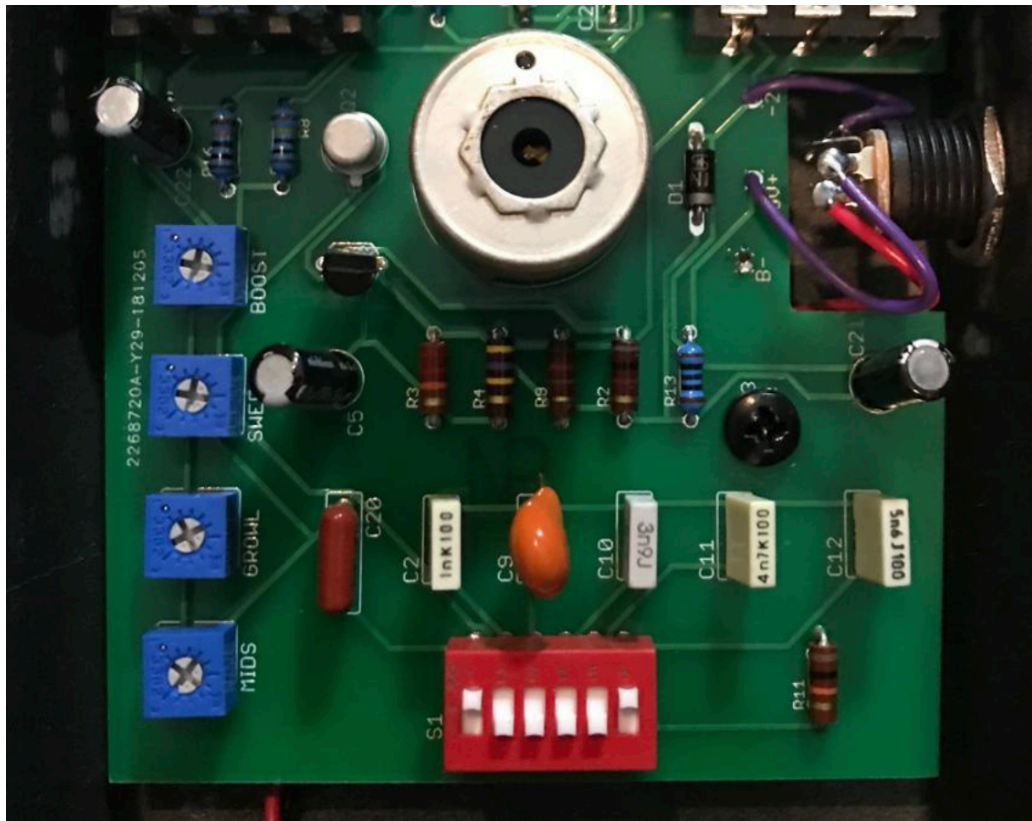




Wilson Wah V2

As mentioned, the Wilson Wah V2 is capable of nailing some of the most sought after wah tones from the days gone by. Not only are these suggested vintage wah settings, these settings were determined by tuning the Wilson Wah V2 side by side the actual vintage wah circuit. Rest assured that when dialing these tones in you are getting the tone of that exact vintage circuit, dialed in from my personal wah collection.

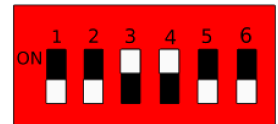


Vintage Wah Settings Guide

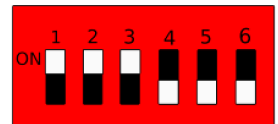
Clyde McCoy Signature Wah: Turn on DIP switch number 4. Leave the internal trimmers set to the stock settings and adjust the boost control to taste.



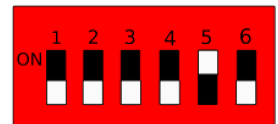
Vox Film Can Inductor Wah: Turn on DIP switches numbered 3 and 4. Leave the internal trimmers set to the stock settings and adjust the boost to taste.



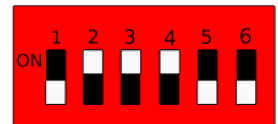
Vintage Colorsound Wah: Turn on DIP switches numbered 1, 2 and 3. You can leave the internal trimmers at the stock settings or add a little bit of growl to the circuit if desired. Adjust the boost to taste.



Italian Jen Wah: Turn on DIP switch number 5. Leave the internal trimmers set to the stock settings and adjust the boost to taste.



Thomas Organ Stack of Dimes Wah: Turn on DIP switches numbered 2, 3 and 4. Leave the internal trimmers set to stock settings and adjust boost to taste.



Purple Budda Wah with Black plate: Turn on DIP switches numbered 2 and 3. Leave the internal trimmers set to the stock settings and adjust boost to taste.

